

The Series 21/75 is a resilient seat, wedge gate valve for isolation purposes, suitable for use with water and neutral liquids (sewage), to a maximum temperature of +70°C. For use in above ground applications with lighter operating elements.

## Features:

- Ductile iron wedge, fully vulcanised with EPDM rubber.
- O-ring stem seals replaceable under pressure.
- Fully corrosion resistant construction.
- Fusion bonded epoxy coating.
- Body/bonnet and gland bolts sealed with hot-melt.
- WRAS approved.

## Options:

- Stem-cap.
- Handwheel, T-Key.
- Alternative flange drilling.
- ISO gland flanged version for gearbox and actuator mounting (21/01).
- Clockwise to open, clockwise to close.
- Version available for salt laden environments (Series 21/58).
- Full range of Flange adaptors and dismantling joints.

## Safety Note:

The valves now accommodate lifting bars for the safe handling of valves. These lifting bars are rated to the weight of the bare valve and stem cap (where fitted) only and should not be utilised if the valve is fitted with pipe, mechanical pipe joints, gearboxes, actuators or any other external fitment. AVK will not accept any responsibility for loss or damage if the lifting bars are not used in strict accordance with this guidance.



The designs, materials and specifications shown are subject to change without notice due to our continuing programme of product development.

## TESTS

Hydraulic test to BS EN 1074-1 & 2.  
 Seat: 1.1 x PN (PFA) Body: 1.5 x PN (PFA). Operating torque test.

## APPLICABLE STANDARDS

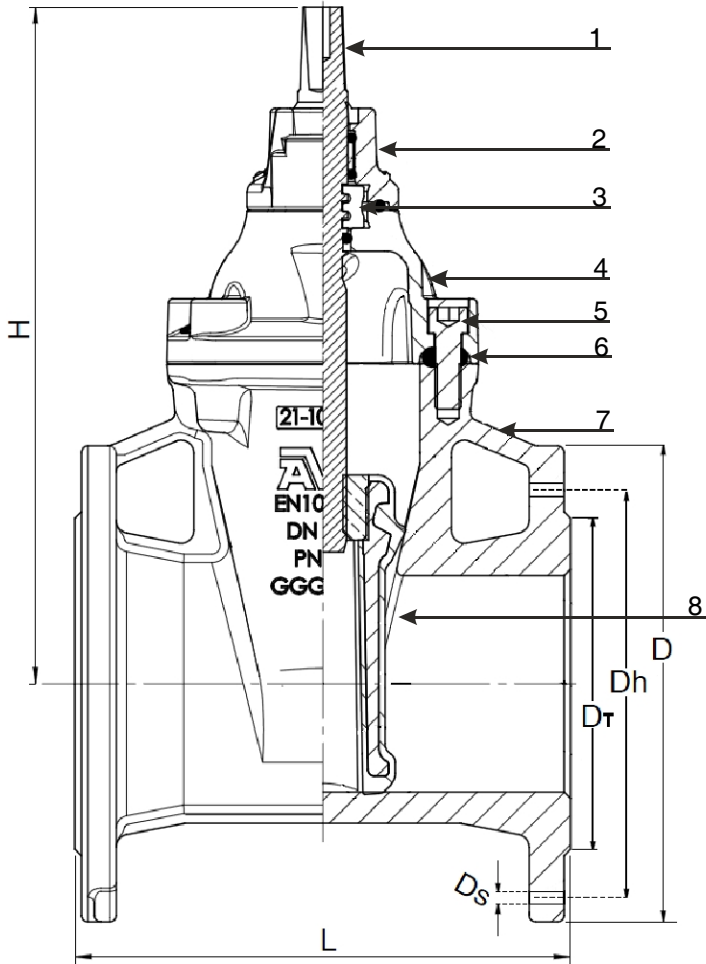
Design to EN 1074 Pt. 1&2  
 Flange cast to EN 1092-2: PN16  
 Drilling to EN 1092-2: PN16

## SERVICE CONDITIONS

Maximum Working Pressure: 16 Bar. (1.6 mpa).  
 Temperature Range: -10°C to +70°C.  
 Insulation essential for temperatures of 0°C and below.  
 Maximum Dry Solid Content: 10%

## MATERIALS OF CONSTRUCTION

No.	DESCRIPTION	MATERIAL
1	Stem	Stainless steel, BS EN 10088-1.No.1.4021.
2	Gland Flange Assembly	Ductile iron, BS EN 1563 EN-GJS-500-7 complete with polyamid bushing containing 1 wiper ring + 3 O rings of EPDM and 2 bolts FZP Gr 8.8 to ISO 4762.
3	Thrust Collar	DZR brass, BS EN 12164, CW602N.
4	Bonnet	Ductile iron, BS EN 1563 EN-GJS-500-7.
5	Bonnet Bolts	FZP Gr 8.8 to ISO 4762 sealed with hot melt.
6	Body, Bonnet Seal	EPDM rubber, ESW-70, WRAS listed.
7	Body	Ductile iron, BS EN 1563 EN-GJS-500-7.
8	Wedge Assembly	Ductile iron, BS EN 1563 EN-GJS-500-7. Fully encapsulated with ESW-70 rubber WRAS listed, complete with wedge nut of DZR brass BS EN 12164, CW 602N.
	Coating	Internal and external, electrostatically applied. Blue epoxy to WIS 4-52-01 Class B. WRAS listed.



## DIMENSIONS & WEIGHTS

Ref No.	DN mm	L mm	H mm	D mm	Dt mm	Dh mm	Ds mm	Holes no.	Theoretical weight kg
21-050-75X140069	50	178	278	165	102	125	21	4	11
21-065-75X140069	65	190	297	185	102	145	21	4	13
21-080-75X140069	80	203	324	200	138	160	20	8	17
21-100-75X140069	100	229	356	220	158	180	20	8	22
21-150-75X140069	150	267	477	285	212	240	24	8	41
21-200-75X140069	200	292	584	340	268	295	25	8	56
21-250-75X140069	250	330	662	405	320	355	30	12	85
21-300-75X140069	300	356	738	455	370	410	30	12	123

X=2 for clockwise to close, 3 for clockwise to open.

